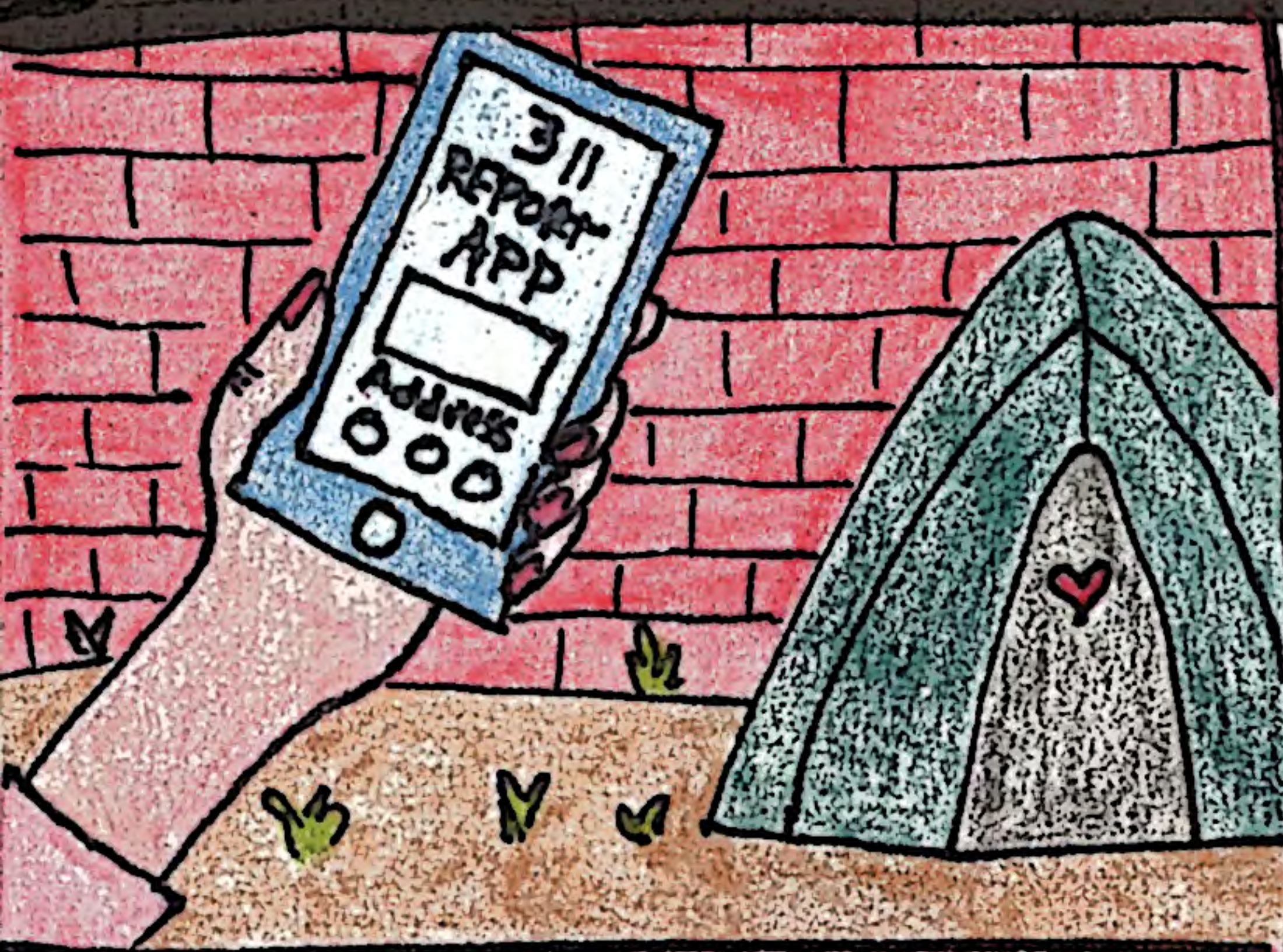


**HARMFUL
COMPASSION:
HOW "HELP" IS
WEAPONIZED
AGAINST PEOPLE
LIVING UNHOUSED**

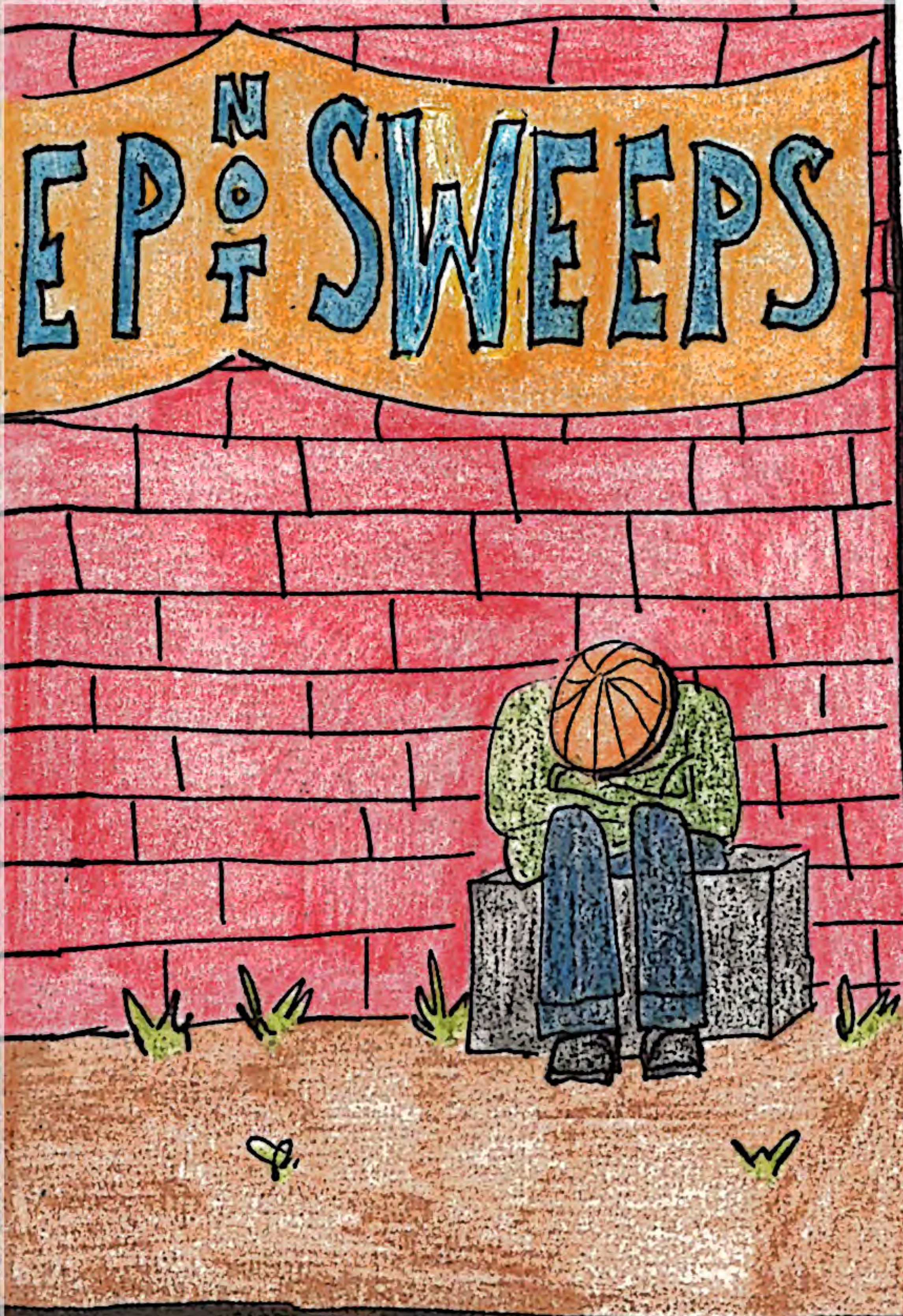


A GROWING NUMBER OF PEOPLE ARE ADVOCATING FOR A "COMPASSIONATE RESPONSE" TO HOMELESSNESS. YET CONCERN, COMPASSION, CARE, + HELP TOO OFTEN END UP DOING SERIOUS HARM.

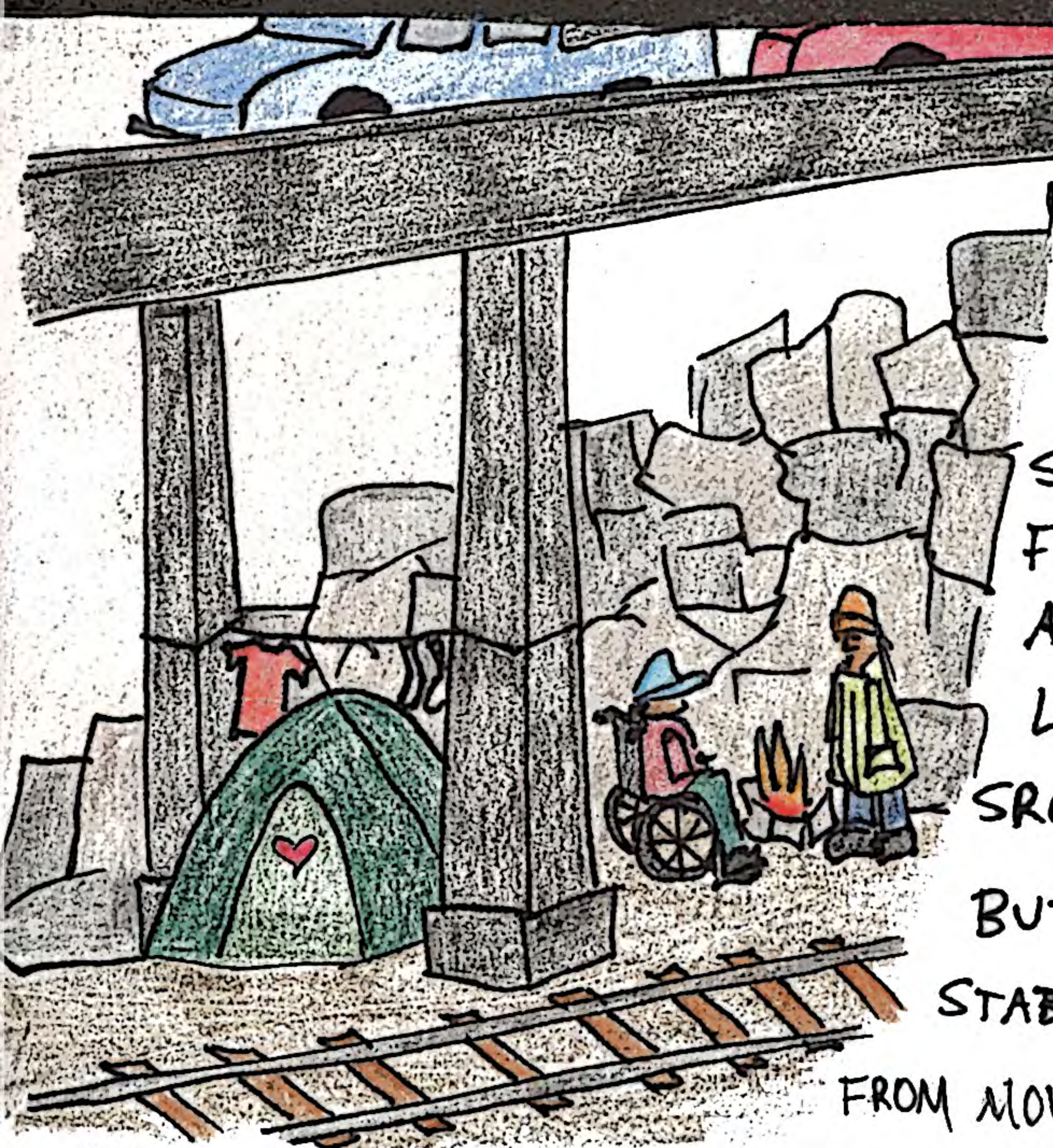


FOR INSTANCE, CONCERNS ABOUT "PUBLIC SAFETY" FREQUENTLY JUSTIFY SWEEPS, IN THE MINDS OF CITY OFFICIALS.





SWEEPS-EVICTIONS-BANISH PEOPLE LIVING UNHOUSED FROM THEIR COMMUNITIES. THEY CAUSE PEOPLE TO LOSE SURVIVAL GEAR, MEDICINE, ID, TREASURED MEMENTOS. TRAPPING PEOPLE IN AN ENDLESS CYCLE OF DISPLACEMENT, SWEEPS ARE INCREDIBLY TRAUMATIZING + DESTABILIZING. THEY DO NOT MAKE ANYONE SAFER.



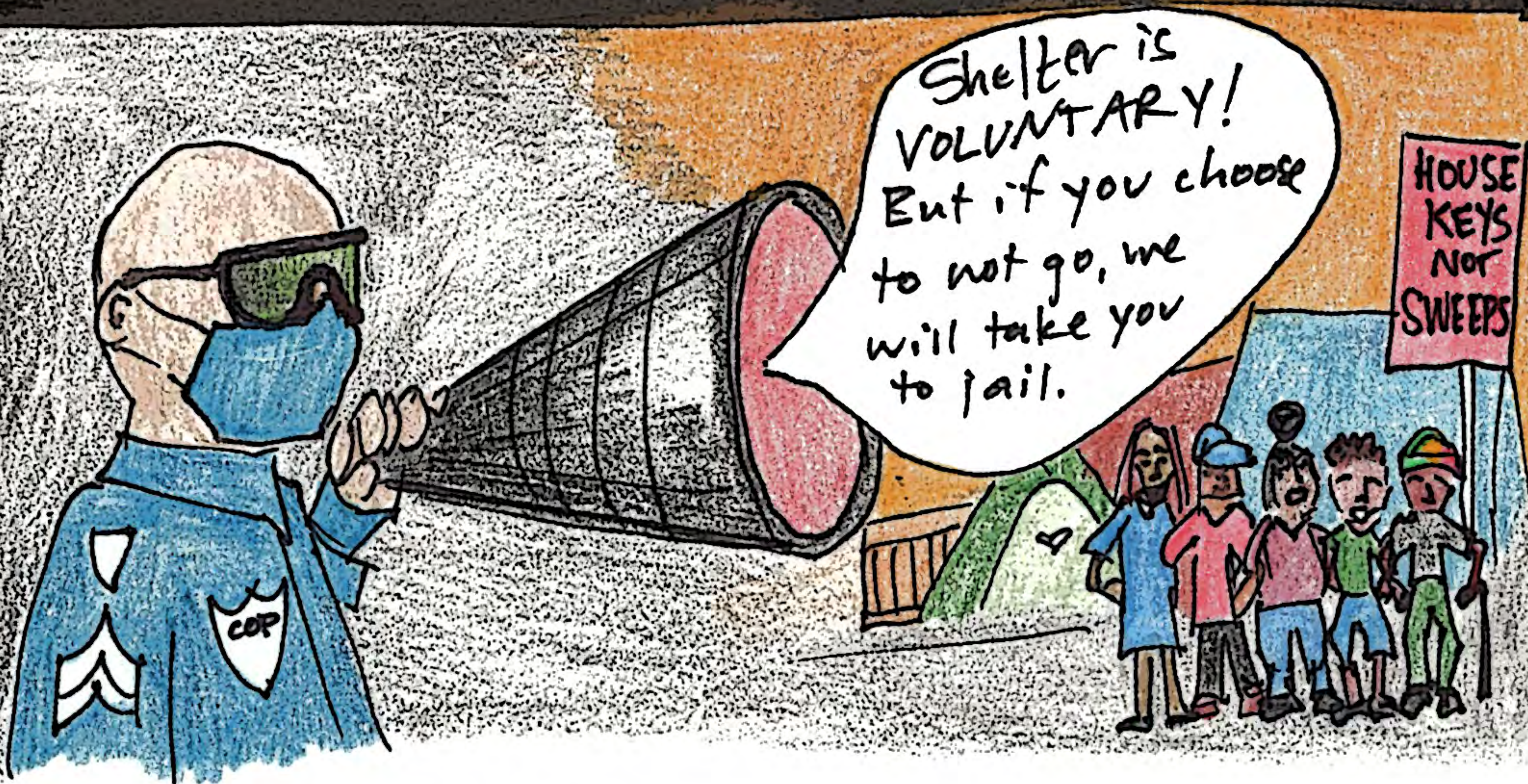
IN FACT, SWEEPS PUSH PEOPLE INTO MORE HAZARDOUS SITUATIONS, SUCH AS FLOODPLAINS + FIRE-PRONE FORESTS, DARK ALLEYS + ABUSIVE RELATIONSHIPS, DANGEROUS SROs + INHUMANE SHELTERS. BUT THE MODICUM OF STABILITY THAT MAY COME FROM MOVING TO HAZARDOUS

AREAS IS OFTEN SHORT-LIVED, WITH CONCERNS ABOUT HEALTH + SAFETY USED TO JUSTIFY EVEN MORE SWEEPS. (2)

We will reduce homelessness quickly and humanely through emergency actions. We will be laser-focused on getting the mentally-ill out of tents and into treatment... It's time to match our big-hearted empathy with tight-fisted accountability.



RECOGNIZING THAT SWEEPS ARE EXPENSIVE + INEFFECTIVE AT HIDING HOMELESSNESS, SOME OFFICIALS CALL FOR A "COMPASSIONATE RESPONSE", ADVOCATING FOR MORE SHELTERS + SERVICES.



YET, SUCH SERVICES ARE TOO OFTEN COERCIVE, INHUMANE, + PATRONIZING. THEY GIVE COVER TO CITIES TO CRIMINALIZE ANYONE WHO DOESN'T PARTICIPATE. AND THEY DO LITTLE TO PROVIDE ACTUAL HOUSING.

③

"CARE COURTS" IN CALIFORNIA, ARE THE LATEST EXAMPLE OF THE WAYS IN WHICH CARE + COMPASSION ARE WEAPONIZED. CARE COURTS CREATE A SEPARATE COURT SYSTEM FOR POOR + UNHOUSED PEOPLE WITH MENTAL HEALTH DISABILITIES. IF PEOPLE REFERRED REFUSE TO ACCEPT "VOLUNTARY SERVICES," A JUDGE CAN ORDER A CLINICAL EVALUATION + FORLED TREATMENT. CARE COURTS ARE JUST ANOTHER WAY TO MAKE PEOPLE INVISIBLE.



FALSE + DISEMPOWERING CONCERN, COMPASSION, + CARE DISPROPORTIONATELY IMPACT PEOPLE ALONG INTERSECTIONAL ^ LINES OF RACE, GENDER, DISABILITY, IMMIGRATION STATUS, + SO FORTH. THIS KIND OF STATE-SANCTIONED, SYSTEMIC VIOLENCE HABITUALLY TARGETS OUR COMMUNITIES.

BUT WE WILL NOT DISAPPEAR.



EVEN THOSE WITH THE BEST OF INTENTIONS CAN END UP DOING HARM. BY FOCUSING ON THE INDIVIDUAL AS IN NEED OF CHANGE, RATHER THAN TARGETING LARGER SYSTEMS OF OPPRESSION, PEOPLE GENUINELY INTENDING TO HELP CAN END UP PERPETUATING THE PROBLEM.

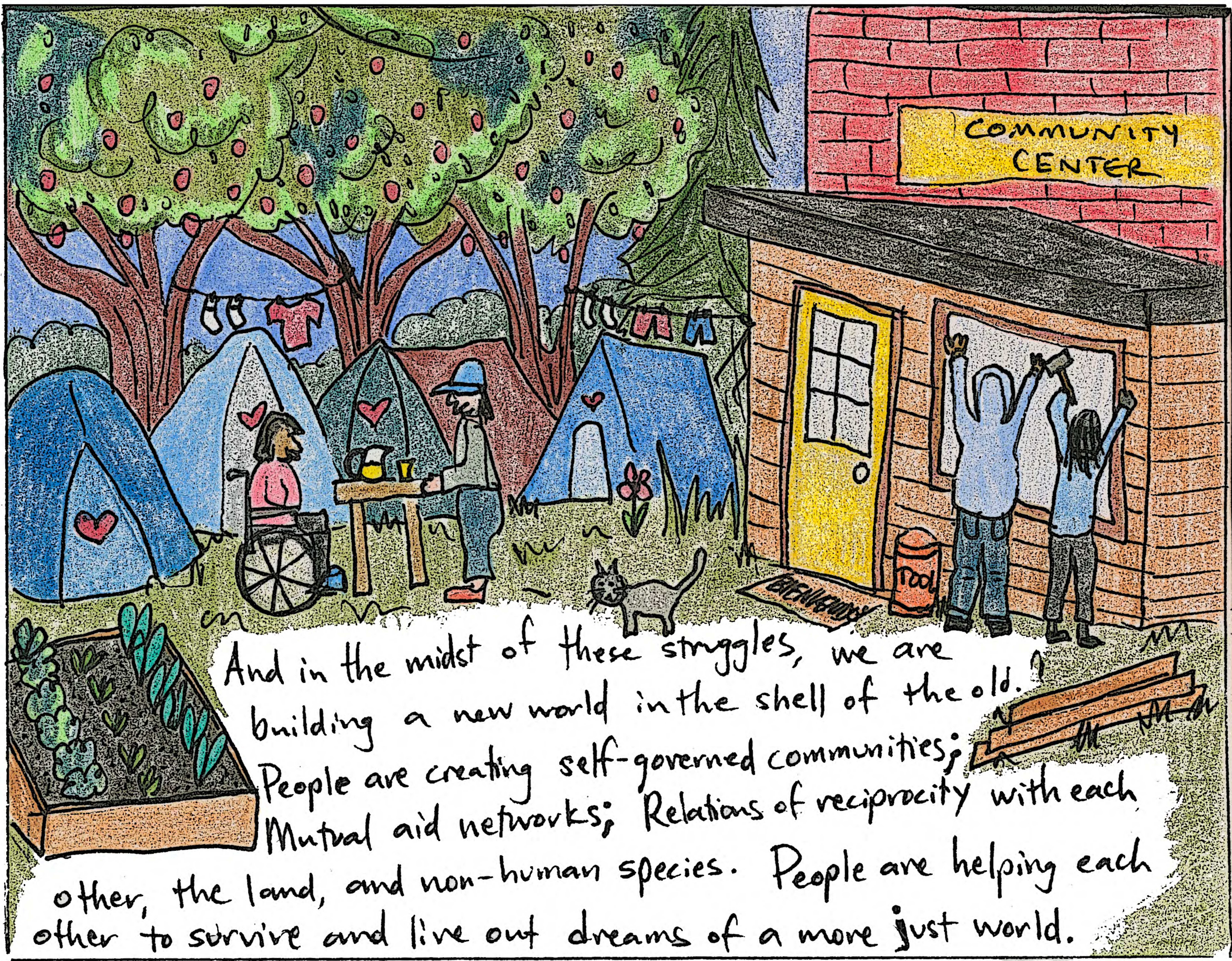
I don't need service providers telling me what to do. I don't want a shelter bed. I'm an expert at surviving. I need a safe place to be. And we need people to join this movement for HOUSE KEYS NOT SWEEPS!



THE SOLUTION???

THOSE HARDEST HIT BY HOMELESSNESS + OPPRESSIVE SYSTEMS HAVE BEEN SURVIVING, THRIVING, + FIGHTING FOR THEIR COMMUNITIES FOR GENERATIONS. LISTEN DEEPLY. BELIEVE WHAT YOU HEAR. WORK IN SOLIDARITY.





And in the midst of these struggles, we are building a new world in the shell of the old. People are creating self-governed communities; Mutual aid networks; Relations of reciprocity with each other, the land, and non-human species. People are helping each other to survive and live out dreams of a more just world.

House Keys Not Sweeps Campaign Demands

1. End the practices of sweeping encampments, towing vehicles, and stealing and destroying belongings and structures houseless people create to keep themselves and their communities safe from the elements.
2. End the criminalization of houseless people, without justifying other types of criminalization, by ending the practices of move along orders, harassment, ticketing and arresting houseless people for existing outside.
3. Immediately halt government support of the hate and violence perpetuated by vigilante groups.
4. Create and fund access to sanitation and hygiene infrastructure that adequately and quickly responds to the growing number of houseless people.
5. Create and fund a full array of health care treatments, including harm reduction resources that appropriately respond to the needs of poor and houseless people.
6. Create affordable housing units for poor and houseless people, providing adequate funding for the development and maintenance with long term subsidies.
7. Overturn unjust policies and procedures that deny access to deeply affordable housing based on economic status and lived experiences of extreme poverty including homelessness.
8. Stop all revenue collection and public funding of BIDs.
9. End all funding of and support for hostile architecture that limits people's ability to access and utilize public spaces.



WWW.WRAPHOME.ORG

**WESTERN REGIONAL
ADVOCACY PROJECT**